

Component Replacement - electrical -



Xperia™ XA1

G3112, G3116, G3121, G3123, G3125

CONTENTS

1 Replaceable Components 3

2 Tools 6

3 Component Placing..... 7

4 Additional Repair Info 9

Additional Repair Info 10

Additional Repair Info 11

5 Revision History 12

For general information about electrical repair related issues, refer to 1220-1336: Generic Repair Manual – electrical

PWB package opening. Too long exposure time increase the level of moisture in PWB and the PWB could delaminate during repair process and result in direct or latent failures and reduce reliability.

The boards shall be baked in 125°C ±5°C for 4 hours.

Test after electrical replacement: refer to 1273-1772 Mechanical Test Instruction

All Electrical components are RLC level C, Reversed Logistic Classification; See the Spare Part Handling chapter in Mechanical/Generic Repair Manual 1220-1333.

Do not remove shield can lids (Heat pasta are added and RF performance will be damaged)

1 Replaceable Components

EXPLANATION OF ABBREVIATIONS USED IN THE COLUMN 'COMMENTS' BELOW

COMPONENT LOCATION

P = Primary side

S = Secondary side

REPAIR METHOD

HA = Hot Air (removal & mounting)

ST = Soldering Tool (removal & mounting)

HA/ST = Hot Air for removal - Soldering Tool for mounting

BGA = BGA Station

BH = Bottom Heater

ADDITIONAL INFORMATION

⇒1 (2,3,4, etc.) = Proceed to 'Additional Repair Info' for further instructions in the indicated section(s).

Component Replacement Repair Drawing Electrical/
Primary Side

| Position | Component | Part no. | Comments |
|----------|-------------------------------------|-------------|--------------------|
| ANT2501 | SPR CONN TM010-307 JTCONN | 2313000161W | P HA ⇨1 |
| ANT2502 | SPR CONN TM010-307 JTCONN | 2313000161W | P HA ⇨1 |
| D1206 | LED | 1770000143W | P HA ⇨2 |
| FJP2301 | COAX CONN C87P101-N0003-H SPEEDTECH | 23350000L00 | P HA+BH ⇨3 |
| FJP2302 | COAX CONN C87P101-N0003-H SPEEDTECH | 23350000L00 | P HA+BH ⇨3 |
| GP2601 | SPR Connector | 2313000105W | P HA ⇨4 |
| GP2602 | SPR Connector | 2313000105W | P HA ⇨4 |
| J1001 | BATT CONN | 2303000119W | P HA+BH / ST+BH ⇨5 |
| PAD2401 | SPR CONN TM010-307 JTCONN | 2313000161W | P HA ⇨6 |
| PAD2402 | SPR CONN TM010-307 JTCONN | 2313000161W | P HA ⇨6 |
| PAD2403 | SPR CONN TM010-307 JTCONN | 2313000161W | P HA ⇨6 |
| SPR3003 | SPR CONN TM010-307 JTCONN | 2313000161W | P HA ⇨7 |

Component Replacement Repair Drawing Electrical/
Secondary Side

| Position | Component | Part no. | Comments |
|----------|---|---------------|---------------------|
| J1401 | MEMSOCKET ST11S008V4H JAE | 2334000054W | S HA+BH or BGA ⇒8 |
| J2801 | SIMSOCKET Dual SIM (For G3112, G3116) | C/23040001700 | S HA+BH or BGA ⇒9 |
| J2801 | SIMSOCKET Single SIM (For G3121, G3123, G3125) | C/23040001800 | S HA+BH or BGA ⇒9 |
| SPR3001 | SPR CONN TM007-303 JTCONN | 2313000134W | S HA ⇒10 |
| SPR3002 | SPR CONN TM007-303 JTCONN | 2313000134W | S HA ⇒10 |
| U1603 | 2nd Mic | 22200000V00 | S HA+BH / ST+BH ⇒11 |

Tools

SPECIAL TOOLS

1. PBA Soldering Fixture (1307-1804)



2 Component Placing

Primary side



Secondary Side



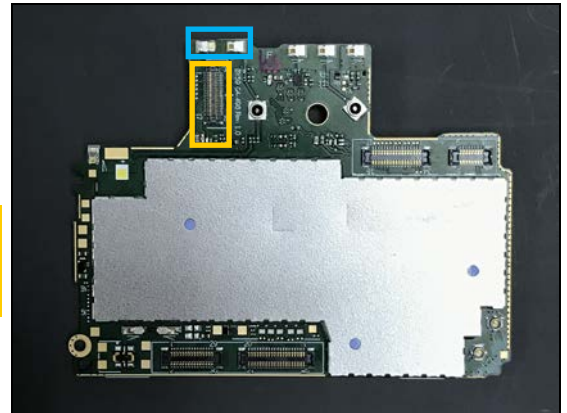
3 Additional Repair Info

1

ANT2501, ANT2502

Replace if mechanical damaged (Poor or no BT/WIFI/GPS connection)

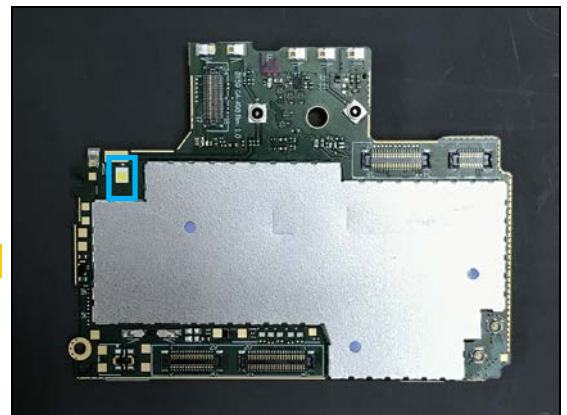
Protect the BtB connector with capton tape!



2

D1206

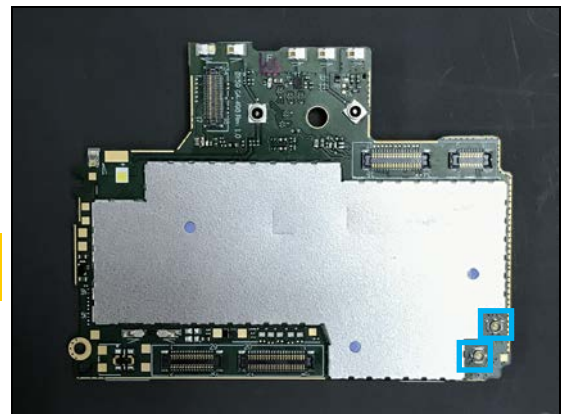
Replace if mechanical damaged (No Flash Light).



3

FJP2301, FJP2302

Replace if mechanical damaged (No or bad network, antenna).

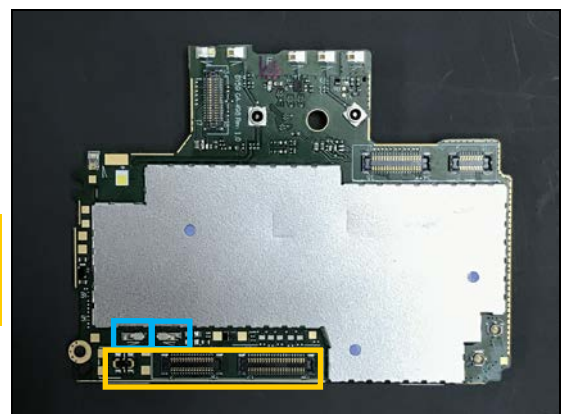


4

GP2601, GP2602

Replace if mechanical damaged (Poor or no NFC connection)

Protect the BtB connector with capton tape!



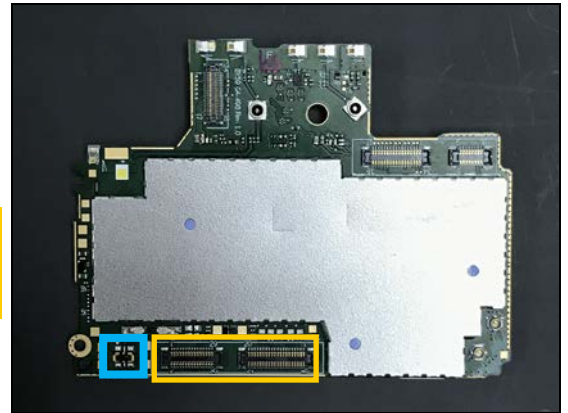
Additional Repair Info

5

J1001

Replace if mechanical damaged (Cannot power on or cannot charge).

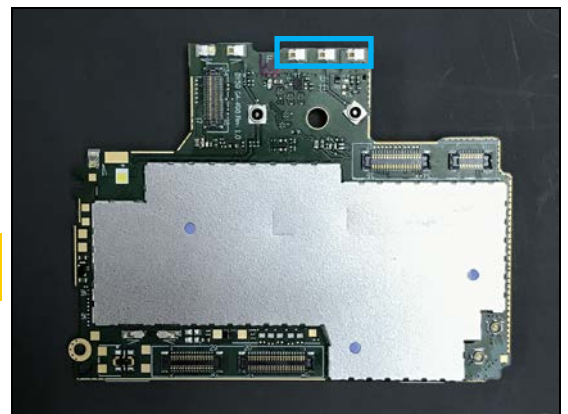
Protect the BtB connector with capton tape!



6

PAD2401, PAD2402, PAD2403

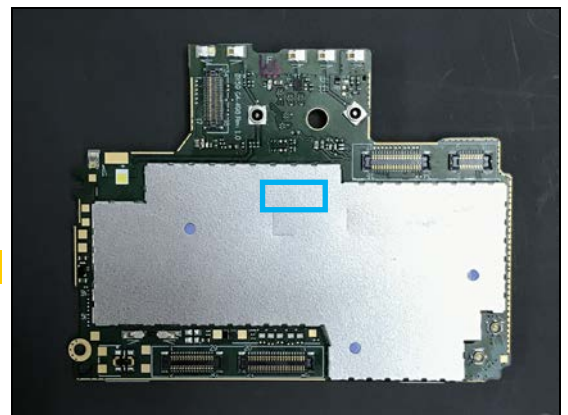
Replace if mechanical damaged (No or bad network, antenna, data transfer error and Diversity Rx Antenna).



7

SPR3003

Replace if mechanical damaged!

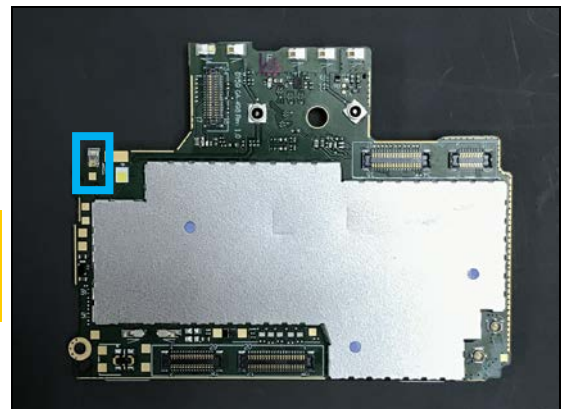


8

J1401

Replace if mechanical damaged (No SD card is detected)

Protect the SIM connector with capton tape!



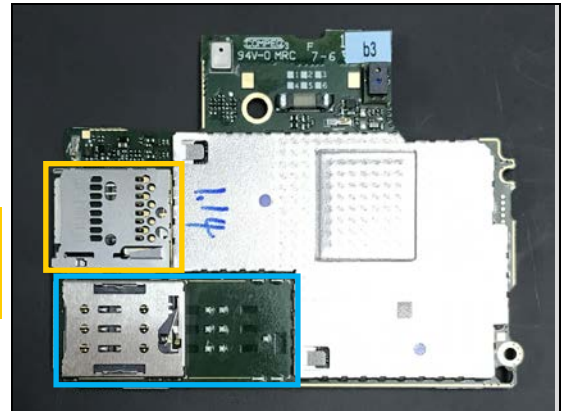
Additional Repair Info

9

J2801

Replace if mechanical damaged (No network, restart, No SIM card is detected, can't insert Cap Tray Assy)

Protect the SD Holder connector with capton tape!

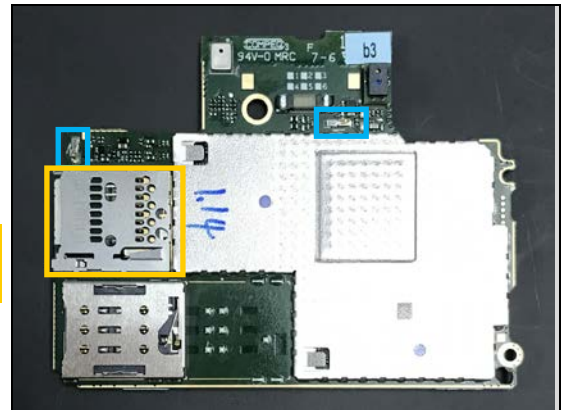


10

SPR3001, SPR3002

Replace if mechanical damaged!

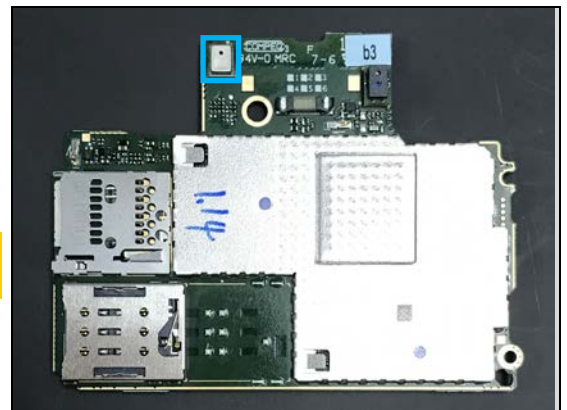
Protect the SD Holder connector with capton tape!



11

U1603

Replace if mechanical damaged (Cannot be heard by counterpart or cannot record voice).



4 Revision History

| Rev. | Date | Changes / Comments |
|------|-------------|--------------------|
| 1 | 2017-Mar-17 | Initial release |